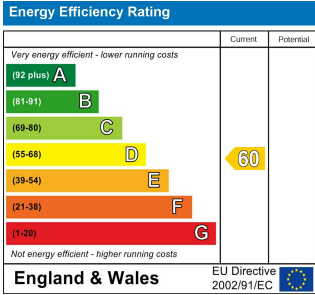


Council Tax Band Exempt
Local Authority

Agents Note: Whilst every care has been taken to prepare these particulars, they are for guidance purposes only. All measurements are approximate and are for general guidance purposes only and whilst every care has been taken to ensure their accuracy, they should not be relied upon and potential buyers/tenants are advised to recheck the measurements.



306 London Road
Croydon
Surrey
CR0 2TJ


CROYDON CREST
PROPERTY SERVICES
info@croydoncrest.co.uk
020 8664 9324
croydoncrest.co.uk



1 Bedrooms

Room

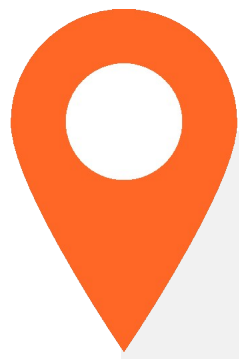
£800

Located In

Coulsdon



croydoncrest.co.uk



245 Chipstead Valley Road

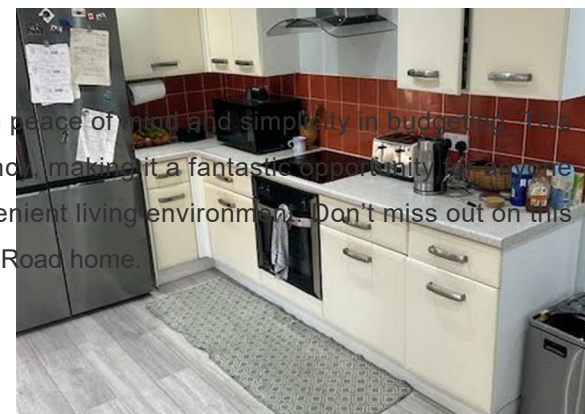
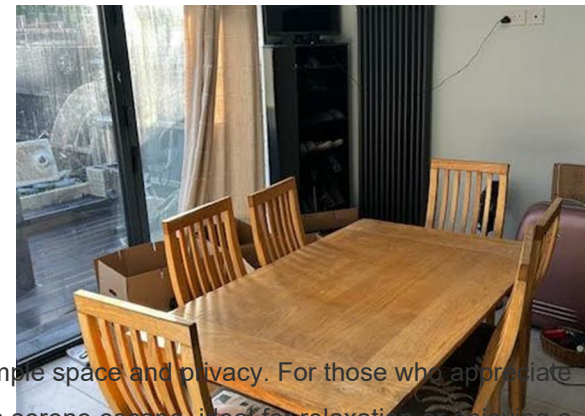
Coulsdon | | CR5 3BY

£800



bathrooms, ensuring that everyone has ample space and privacy. For those who appreciate the outdoors, the lovely garden provides a serene escape, ideal for relaxation or enjoying a sunny afternoon.

The rent is fully inclusive of bills, offering peace of mind and simplicity in budgeting. This room is available for immediate occupancy, making it a fantastic opportunity for anyone looking to settle into a friendly and convenient living environment. Don't miss out on this wonderful chance to call Chipstead Valley Road home.



Nestled in the charming area of Chipstead Valley Road, Coulsdon, this delightful double room is now available for rent in a welcoming house share. Built in 1950, the property exudes character while offering modern comforts. The room is spacious and well-lit, making it an ideal location for anyone seeking a comfortable living space.

Conveniently located just a five-minute walk from shops and Coulsdon Town station, commuting to London and beyond is a breeze. Additionally, with a bus stop right on your doorstep, you will find excellent transport links to the surrounding areas.

The house boasts shared facilities that include a large and inviting kitchen/diner, perfect for socialising and enjoying meals with housemates. There are also two well-maintained

- Double room in house share
- Bills included in rent
- Two shared bathrooms
- Immediate availability
- Built in 1950
- 5 mins to Coulsdon Town
- Large kitchen/diner
- Lovely garden access
- Bus stop on doorstep
- Viewing recommended